

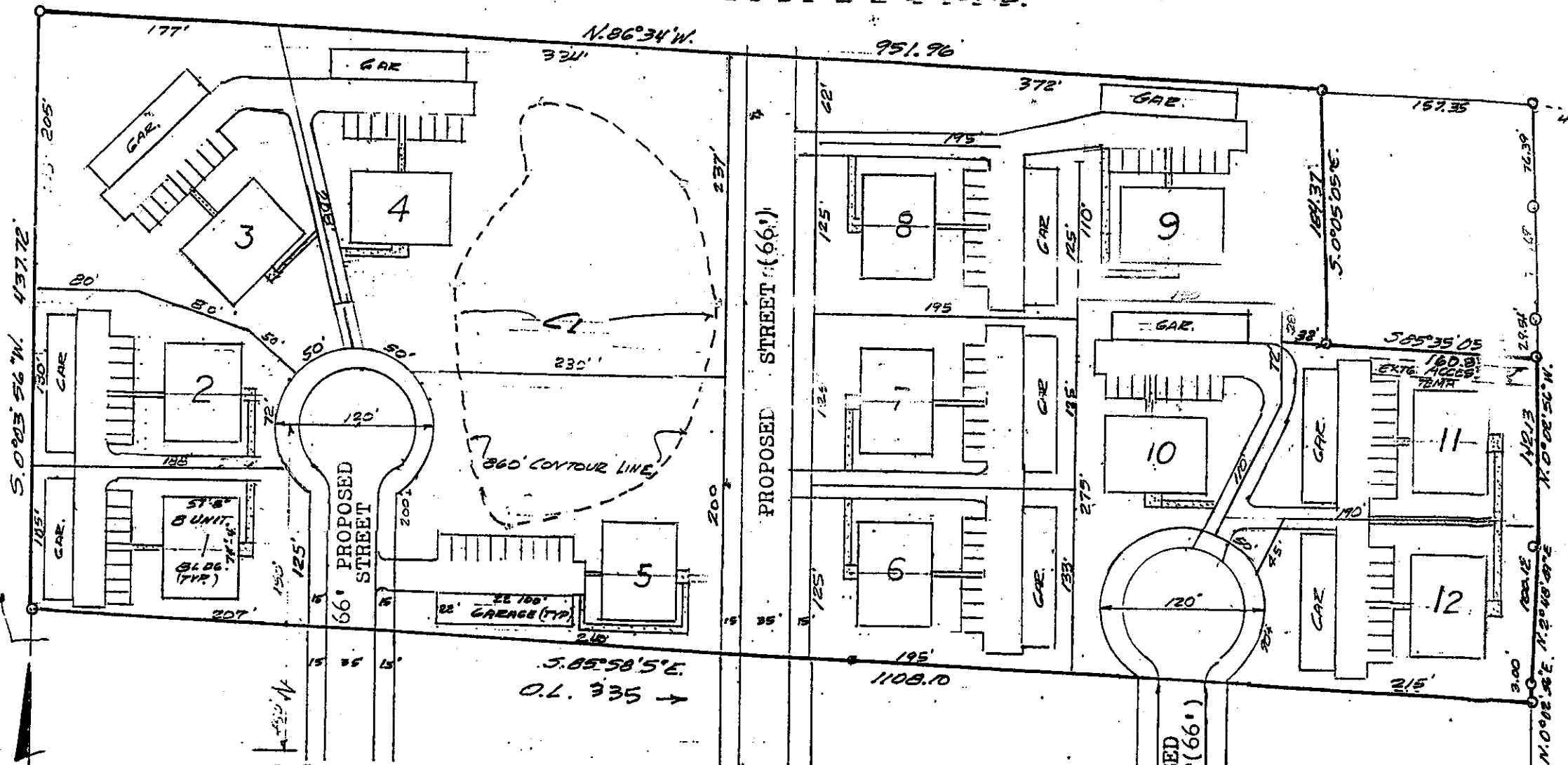
Milton

LOT 1 C.S.M. VOL. 6 PG. 72.

CITY LIMITS

T.4N. R.13E. SEC. 27-4-13 BONNER'S LAKE RD.

246.53' SOUTH SEC. LINE.



PROPOSED PRELIMINARY MULTI-FAMILY DEVELOPMENT PLAN

Part of Outlot 335 of the Assessor's Plat of the Village of Milton, being also a part of the NE.1/4 NE.1/4 of Section 27, T.4N., R.13E., City of Milton, Rock County, Wis.

10.37 ACRES

BY; Reuben F. Schulz
RLS. & PE.

SCALE: 1" = 100'

S.T.H. "26"

Handwritten signature or initials.