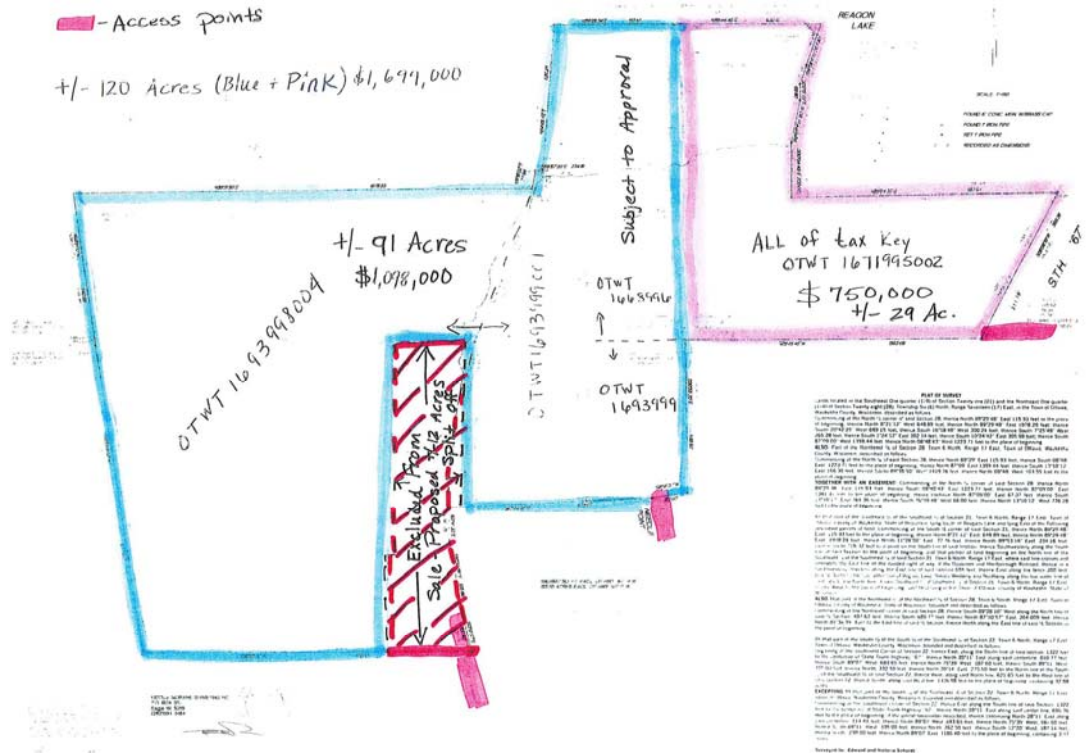


# TOWN OF OTTAWA Waukesha County



## LARGER MAP ON BACK SIDE OF PAGE

This is an opportunity to purchase land in many different options (split subject to approval by all governmental agencies). Parcel has access to Reagons Lake with pier as well as the private Grants Lake. There is a C R P (Conservation Reserve Program) in place on a portion of the acreage in effect until 2009.

**+/- 120** acres includes the following tax key #'s and all portions of plat map except the proposed split of +/- 12 acres for owner and their home (marked w/ red diagonal lines).  
Offered for **\$1,699,000** **MLS # 1002917**

**+/- 29** acres accessed from Hwy 67. This piece will keep the lake frontage on Reagons Lake. Includes all of tax key OTWT 1671995002. Highlighted in purple on plat map and being offered for **\$750,000** **MLS # 1002932**

**+/- 91** acres with proposed access off Needle Point Lane. This piece will have sole access to Grants Lake. Highlighted in blue on plat map. This piece excludes the area marked w/ red diagonal lines and includes part of tax key OTWT 1693998004 & OTWT 1693999001, OTWT 16939999, & OTWT 1668996. **\$1,098,000**  
**MLS # 1002973**

Contact the Bill Minett Team at (877) 367-6480  
426 E Wisconsin Avenue  
Oconomowoc, WI 53066

