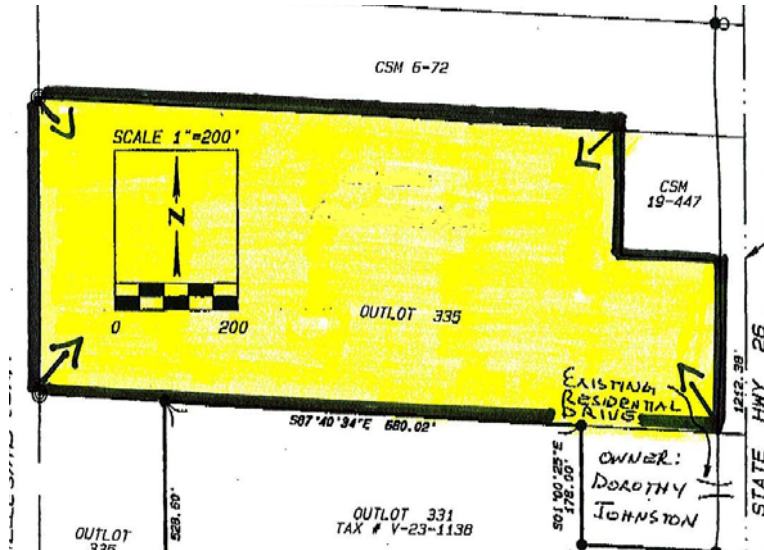


N. Janesville Road ~ City of Milton ~ Rock County



10.37 Acres (+/-) available for \$ 450,000

MANY BUILDING OPTIONS

The property is zoned R – 4. Zoning allows for up to 14 units per acre (please see city zoning code) but current approval is for (6) two– story buildings with 8 units in each.

Property Pin # 1674

MLS # 1038139

Utilities		Tax Information	
Telephone	Available	Tax Key	237 1230082
Electric	Available	Tax Year	2007
Water	Down the Road	Tax Amount	\$ 1,076.85
Waste	Sewer-Lift station req. Down the Road	Zoned	R- 4

Directions: I-90 / I-39 to Hwy 26, exit north to Milton. Follow Hwy 26 a/k/a Janesville Street to the north side of Milton, property on west side of road just north of Nelson Avenue.



426 E. Wisconsin Avenue
Oconomowoc, WI 53066

Contact

The Bill Minett Team

Toll free: 1-877-367-6480

Fax: 262-567-6640

Website: www.billminett.com

E-mail: info@billminett.com