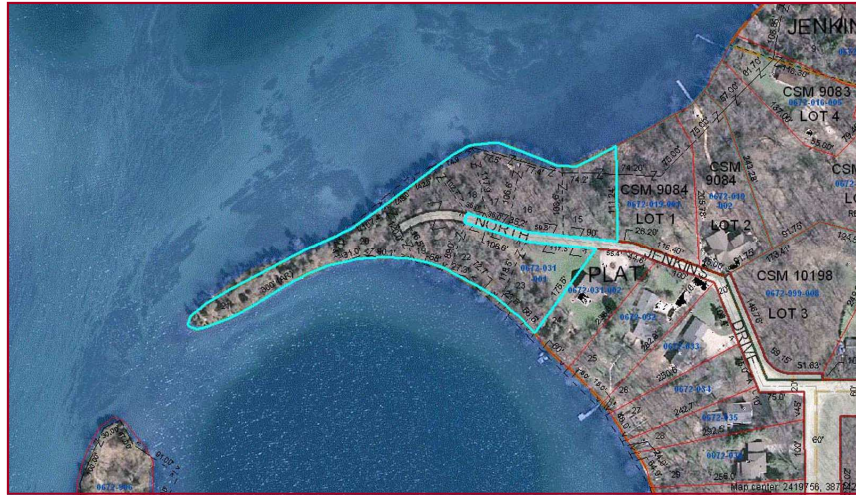


LOTS 15-23 JENKINS DRIVE

Town of Summit ~ Waukesha County



(+/-) 600' Lower Nemahbin Lake Frontage
\$1,899,900

The ultimate in lake front privacy... (+/-) 1.88 acres of wooded lake front land on a peninsula of Lower Nemahbin Lake. Conveniently located near I-94 yet secluded for your own silver of paradise. Sunsets and southern exposure. Survey on file.

Utilities		Tax Information	
Telephone/ Cable	Yes	Tax Key	SUMT0672031001
Electric/Gas	Yes	Tax Year	2009
Water	Private Well	Tax Amount	\$ 9,231.02
Waste	Sewer	Zoned	Residential

School District	Oconomowoc Schools
Pin # / MLS#	PIN# 1594 / MLS# 1082625
Listing Agent	Bill Minett

Directions: CTY. DR to Waterville Road south to Jenkins Drive to property.



426 E. Wisconsin Avenue
Oconomowoc, WI 53066

Contact The Bill Minett Team

Toll free: 1-877-367-6480

Fax: 262-567-6640

Website: www.billminett.com

E-mail: www.info@billminett.com