



LC3693116-006

3693116

FORM BBC-101

CERTIFIED SURVEY MAP NO. 10711

21/6

BEING A REDIVISION OF ALL OF LOT 2 OF C.S.M. NO. 7283, LOCATED IN THE NW 1/4 OF THE NE 1/4 OF SECTION 6, T.7N., R.17E., CITY OF OCONOMOWOC, WAUKESHA COUNTY, WISCONSIN

SURVEYOR

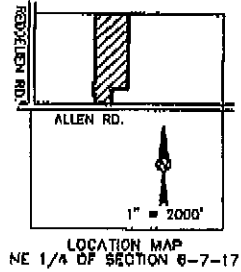
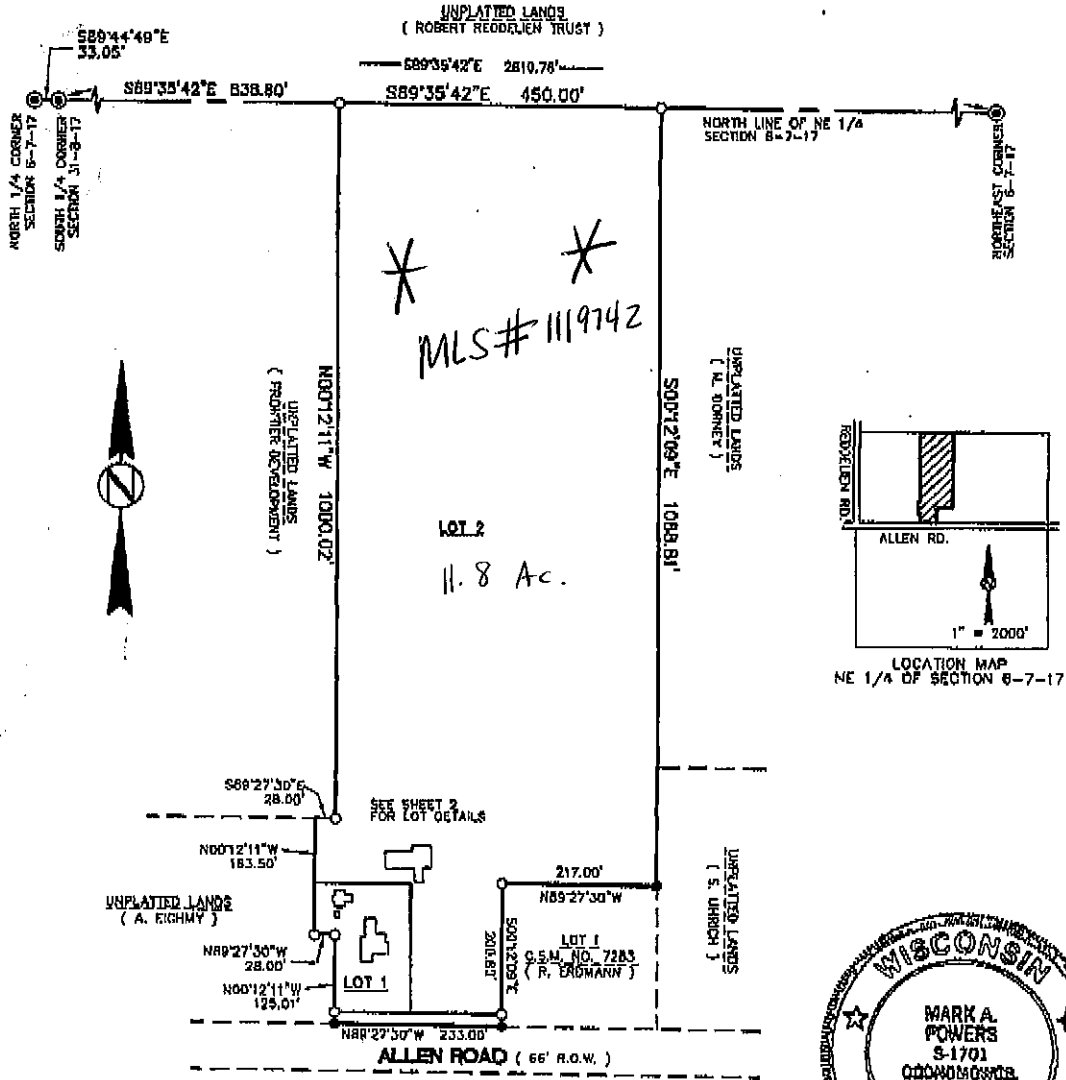
MARK A. POWERS, RLS 1701
LAKE COUNTRY ENGINEERING, INC.
W359 N5920 BROWN ST., SUITE 102
OCONOMOWOC, WI. 53066
(262)569-9331

SURVEY FOR

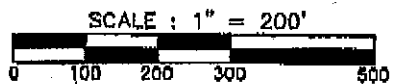
FRONTIER DEVELOPMENT
1833 EXECUTIVE DR., SUITE 101
OCONOMOWOC, WI 53066

LEGEND

- ⊙ - CONC MON W/ BRASS CAP
- - 1.25" O.D. IRON PIPE SET, 18" LONG, WT. = 1.88 LBS/LIN. FT.
- - 1.25" O.D. IRON PIPE FOUND



Mark A. Powers
March 5, 2009
Revised 6/18/2009



BEARINGS REFERENCED TO THE NORTH LINE OF THE NE 1/4 OF SEC. 6-7-17, AS ASSUMED S89°35'42"E

200

PROPERTY ATTACHMENT MAP

BEING ALL OF LOT 2 OF C.S.M. NO. 7283, AND A PART OF THE NE 1/4 OF SECTION 6, T.7N., R.17E., TOWN OF SUMMIT, WAUKESHA COUNTY, WISCONSIN

PREPARED BY

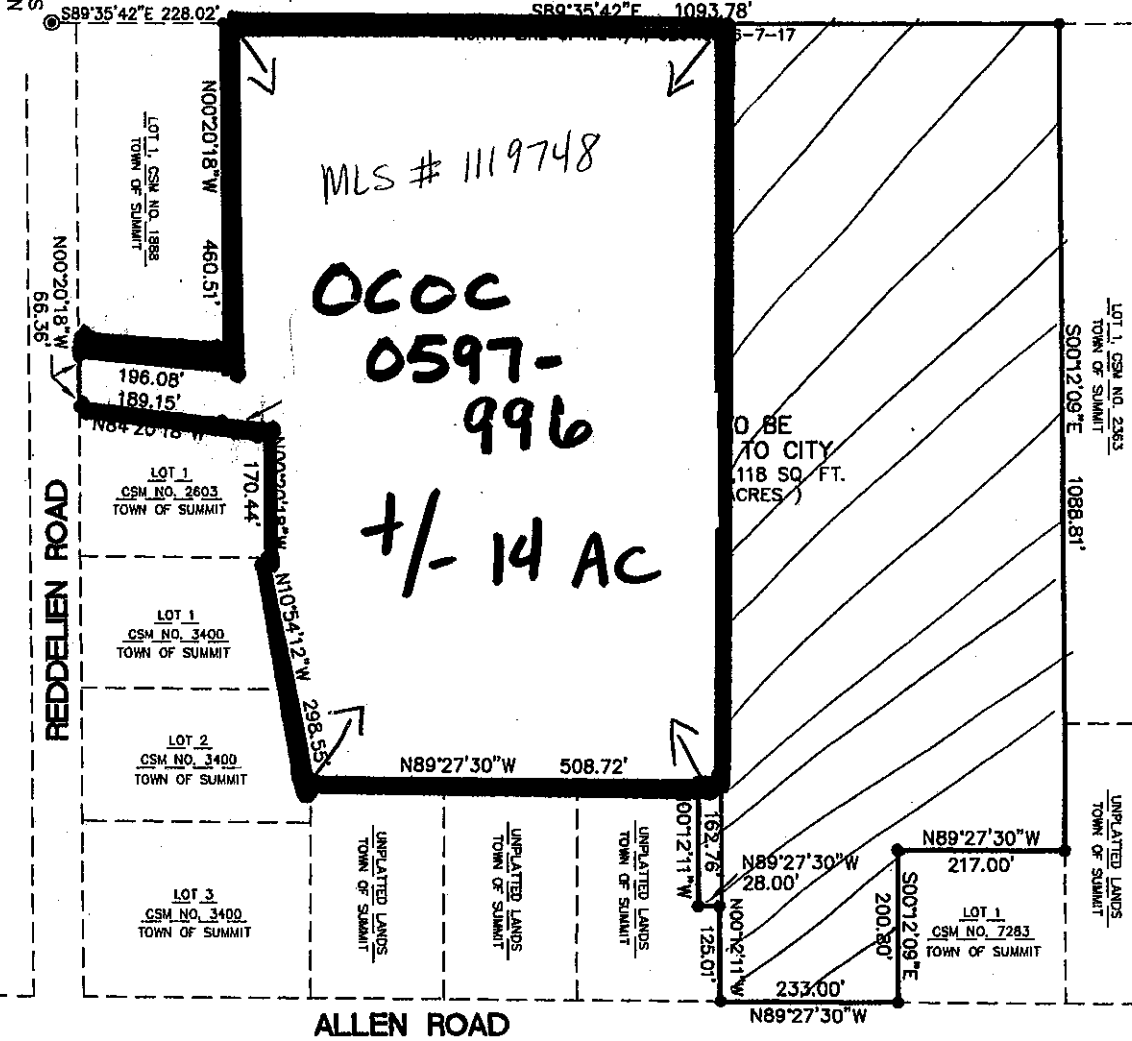
MARK A. POWERS, RLS 1701
LAKE COUNTRY ENGINEERING, INC.
970 S. SILVER LAKE ST., SUITE 105
OCONOMOWOC, WI. 53086
(262)569-9331

PREPARED FOR

FRONTIER DEVELOPMENT
1833 EXECUTIVE DRIVE, SUITE 101
OCONOMOWOC, WI. 53086

NORTH 1/4 CORNER
SECTION 6-7-17

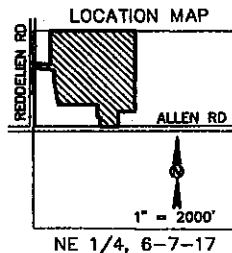
UNPLATTED LANDS
TOWN OF SUMMIT



Mark A. Powers
November 20, 2003



SCALE : 1" = 200'



PROPERTY ATTACHMENT MAP

BEING ALL OF LOT 2 OF C.S.M. NO. 7283, AND A PART OF THE NE 1/4 OF SECTION 6, T.7N., R.17E., TOWN OF SUMMIT, WAUKESHA COUNTY, WISCONSIN

PREPARED BY

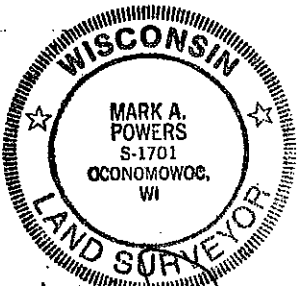
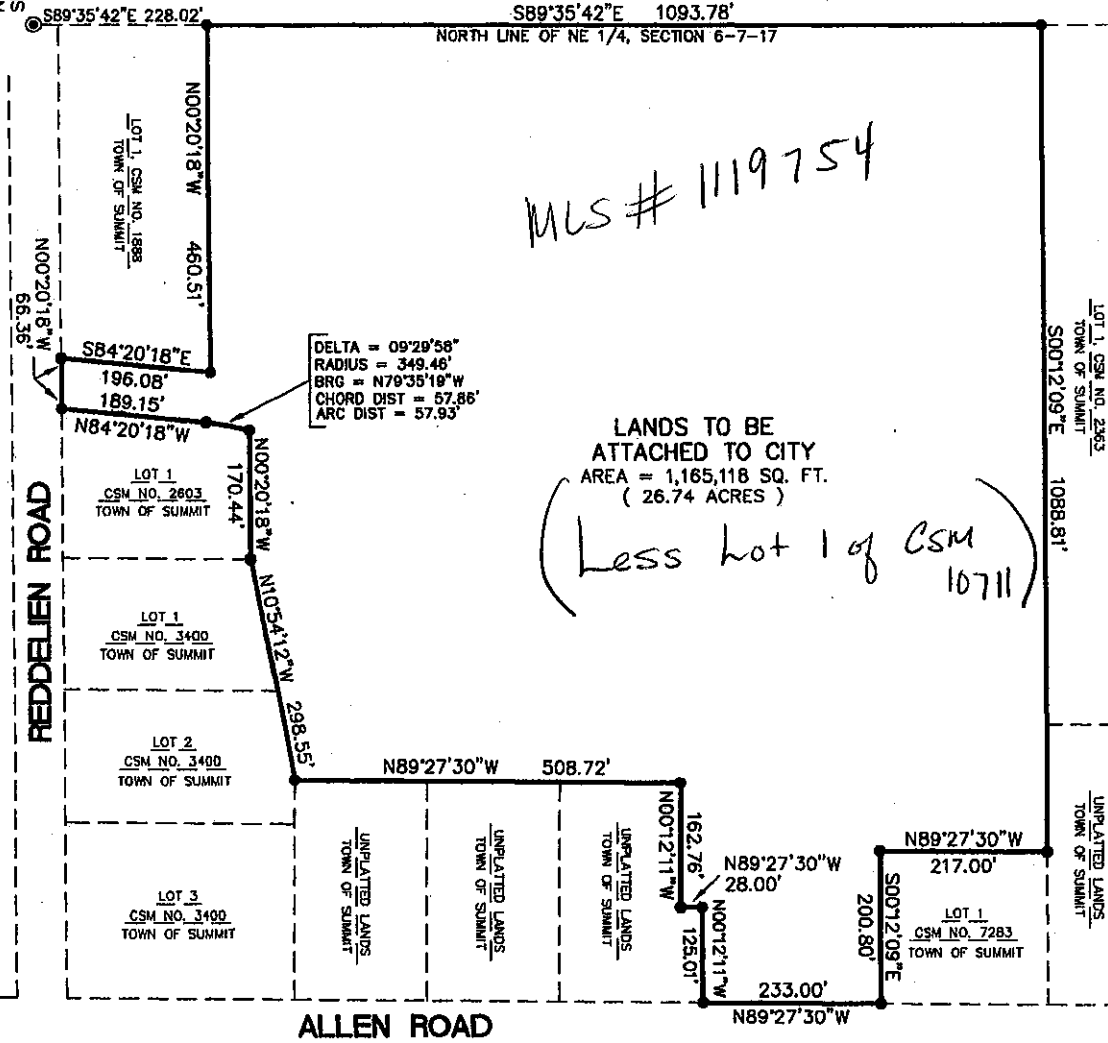
MARK A. POWERS, RLS 1701
 LAKE COUNTRY ENGINEERING, INC.
 970 S. SILVER LAKE ST., SUITE 105
 OCONOMOWOC, WI. 53088
 (262)589-9331

PREPARED FOR

FRONTIER DEVELOPMENT
 1839 EXECUTIVE DRIVE, SUITE 101
 OCONOMOWOC, WI. 53088

NORTH 1/4 CORNER
 SECTION 6-7-17

UNPLATTED LANDS
 TOWN OF SUMMIT



Mark A. Powers
 November 20, 2003



SCALE : 1" = 200'

